



EPSON® SureColor® T-Series

Our Entry into the Engineering Scientific Markets

Product Preview

EPSON®

The Art of Performance.



SureColor T3000 - 24"

\$2,995 MSRP

41.3" W x 32" D x 44.4" H
146 lbs.



SureColor T5000 - 36"

\$3,995 MSRP

55.5" W x 32" D x 44.4" H
177 lbs.

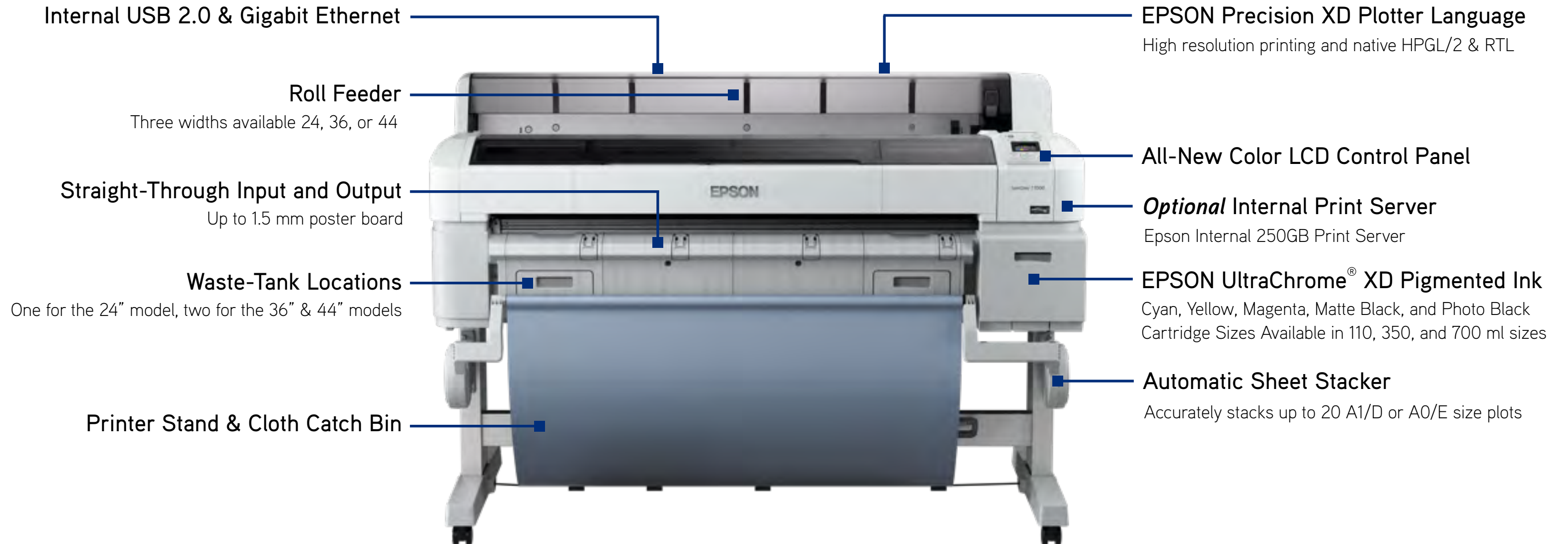


SureColor T7000 - 44"

\$4,995 MSRP

63.3" W x 32" D x 44.4" H
192 lbs.

All New Development by Epson



The Smallest Footprints in their Class

Product Features

All New Development by Epson

Error Status Lamp

Easy to notice from across a large space

Full Color LCD Panel

Simple Icon-based interface

Simple Button Layout

The most used actions have their own buttons



Product **Features**

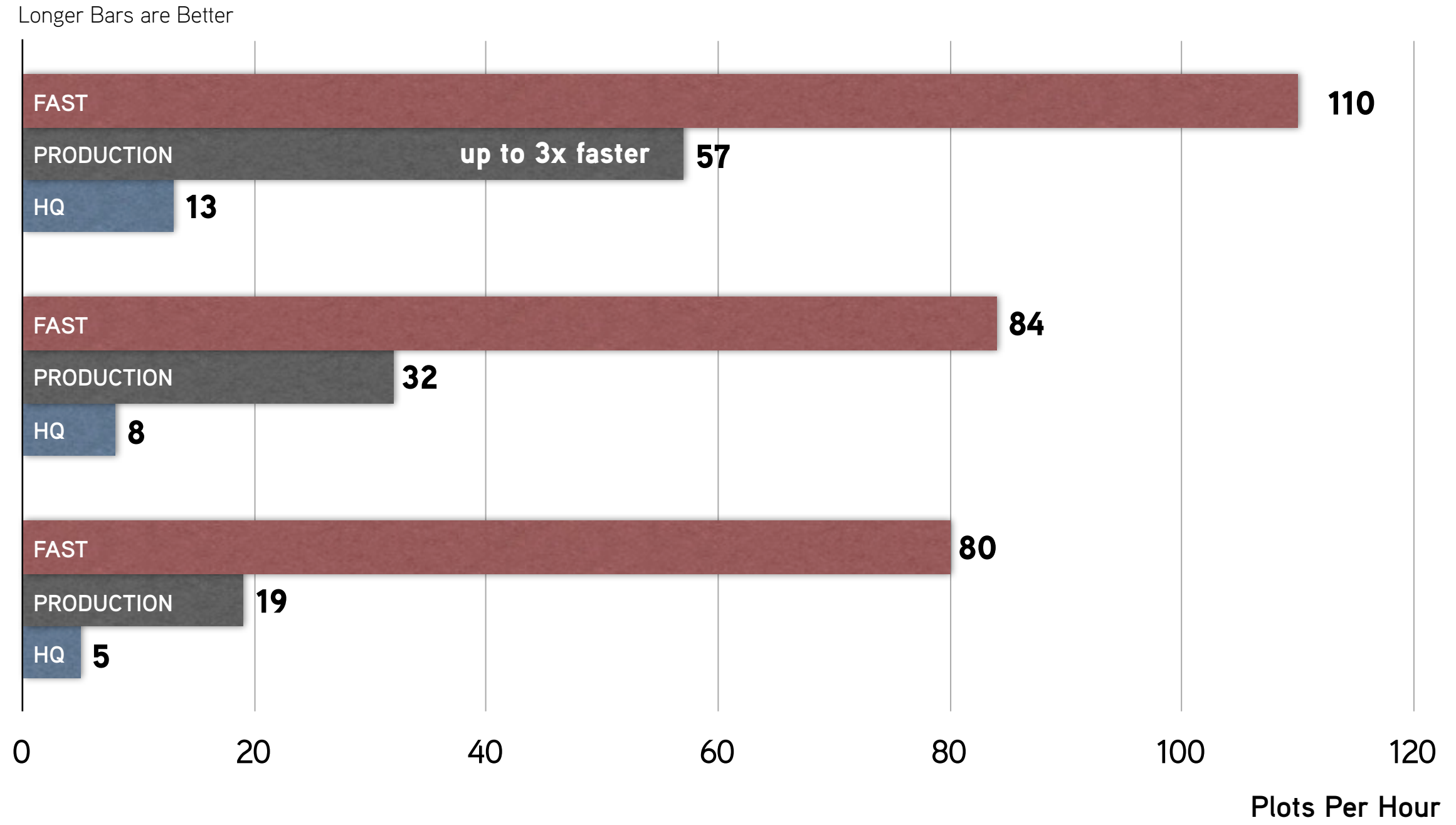
All New Development by Epson

Simple Front-Loading Ink Cartridges

5-Color configuration including Cyan, Yellow, Magenta, Matte Black, and Photo Black
Available in three fill sizes – 110 ml, 350ml, or 700 ml

You can mix-and-match different sizes for each color

EPSON UltraChrome XD



All plots/hour speeds in this document are extrapolated based on printing and cutting time for a 10-page set of D-sized (34" W x 22" L) drawings. Total throughput time depends on workstation configuration, file size, print resolution, ink coverage, networking, etc.

precision
output



■ The Fastest Plotting Speeds in its Class

- As little as 25 seconds for a A1/D sized plot, and up to 110 A1/D plots per hour¹

■ Extremely Precise Output

- Unique high-performance Epson MicroPiezo[®] TFP[®] print head technology
- Capable of accurately plotting minimum line widths as small as 0.018 mm in thickness!

■ High Print Durability & Archivability

- EPSON UltraChrome XD pigment-based ink technology produces brilliant image quality on virtually any media - while being truly archival, and extremely smudge and water-resistant

■ Low Cost-of-Ownership

- Large capacity ink cartridges up to 700 ml per color for low printing costs
- Utilizes significantly less power than other plotters in this class

■ Compatible Now & Ready for the Future

- The EPSON Precision XD printer language sets a new standard for technical imaging
- Advanced driver technology for high-resolution printing

1. Print Speed is based on extrapolated printing and cutting time for a 10-page set of D-sized (34" W x 22" L) drawings (SC-T3000 model is slightly slower)

extreme
plot speeds



■ Simple-to-Use & Virtually Maintenance-Free

- Front-loading consumables with large ink cartridges up to 700 ml per color

■ Precision Engineered by Epson

- Automated high-precision laser welding robots for assembly of main printer mechanism
- Extremely rigid printer mechanism for precise mechanical operation

■ True Photographic Print Quality

- All-new color screening technology designed to produce true continuous-tone photo printing rivaling traditional six-color printers

■ Optional Internal Print Server

- Internal 250GB hard drive quickly releases your workstations for unattended plotting
- Built-in web site for all printer maintenance and plot job management

■ World-Class Service and Support

- Usually next-business-day on-site service with telephone support available Monday through Friday - The same service team used by our award-winning proofing systems

	SURECOLOR T3000	DESIGNJET T790	DESIGNJET 510
Printer Width	24-Inch	24-Inch	24-Inch
Print Head Configuration	Epson MicroPiezo TFP	HP Thermal Ink Jet	HP Thermal Ink Jet
Color Configuration	CMYK + MK	CMYK + Lk + MK	CMYK
Maximum Print Resolution	2,880 x 1,440 dpi	2,400 x 1,200 dpi	2,400 x 1,200 dpi
Smallest Droplet Size (picoliter)	3.5 pl	6 pl Color / 9 pl Mk & Y	4 pl Color / 18 pl Black
Line Accuracy / Minimum Line Width	±0.1% / 0.018 mm	±0.1% / 0.06 mm	±0.2% / 0.08 mm
Ink Technology	Pigment	Dye Color + Pigment MK	Dye Color + Pigment Black
Maximum Ink Capacity per Color	700 ml	130 ml	69 ml
Maximum A1/D Print Speed - 'Fast'	28 sec/page	43 sec/page	1.3 min/page
Maximum A1/D Print Speed - 'Production'	52 sec/page	2.8 min/page	7 min/page
Maximum A1/D Print Speed - 'Best'	2.7 min/page	9.4 min/page	16 min/page
Printer Language	Epson Precision XD, HP-GL/2	HP PCL 3, HP-GL/2	HP PCL 3, HP-GL/2
Connectivity - Standard	USB 2.0 & Gigabit Ethernet	USB 2.0 & 10/100 Ethernet	USB 2.0 & Parallel
Connectivity - Optional	Not Required	JetDirect Slot	10/100 Ethernet
Ink Cost-per-ML (MSRP / Total ML)	\$0.40 All Colors	\$0.53 All Colors	\$0.63 CMY + \$0.60 K
Replacement Print Head MSRP	Not Required	\$67.00 x 3 Heads	\$41.99 x 4 Heads
Printer MSRP	\$2,995	\$2,500	\$1,850

All prices include the printer stand if optional | All data as of September 2012 | **This color is the winning-feature**

Print speeds are engine speeds only, based on printing one D-sized page (34" W x 22" L). Total throughput time depends on workstation configuration, file size, print resolution, ink coverage, networking, etc.

Ink cost per ml is a simple estimate derived from cartridge MSRP divided by fill volume. This estimate does not necessarily reflect the actual cost of ink for a particular print, which can vary considerably based on image printed, print settings, paper type, frequency of use and temperature. For print quality, a variable amount of ink remains in the cartridge after the "replace cartridge" indicator comes on.

	SURECOLOR T5000	CANON iPF760	CANON iPF765
Printer Width	36-Inch	36-Inch	36-Inch
Print Head Configuration	Epson MicroPiezo TFP	Canon FINE - PF-04	Canon FINE - PF-04
Color Configuration	CMYK + MK	CMYK + MK	CMYK + MK
Maximum Print Resolution	2,880 x 1,440 dpi	2,400 x 1,200 dpi	2,400 x 1,200 dpi
Smallest Droplet Size (picoliter)	3.5 pl	4 pl	4 pl
Line Accuracy / Minimum Line Width	±0.1% / 0.018 mm	±0.1% / 0.02 mm	±0.1% / 0.02 mm
Ink Technology	Pigment	Dye Color + Pigment MK	Dye Color + Pigment MK
Maximum Ink Capacity per Color	700 ml	130 ml	130 ml
Maximum A1/D Print Speed - 'Fast'	25 sec/page	28 sec/page	28 sec/page
Maximum A1/D Print Speed - 'Production'	48 sec/page	1.5 min/page	1.5 min/page
Maximum A1/D Print Speed - 'Best'	2.5 min/page	3.5 min/page	3.5 min/page
Printer Language	Epson Precision XD, HP-GL/2	GARO, HP-GL/2	GARO, HP-GL/2
Connectivity - Standard	USB 2.0 & Gigabit Ethernet	USB 2.0 & Gigabit Ethernet	USB 2.0 & Gigabit Ethernet
Ink Cost-per-ML (MSRP / Total ML)	\$0.40 All Colors	\$0.51 All Colors	\$0.51 All Colors
Replacement Print Head MSRP	Not Required	\$450 x 1 Head	\$450 x 1 Head
Printer MSRP	\$3,995	\$4,495	\$4,995

All prices include the printer stand if optional | All data as of September 2012 | **This color is the winning-feature**

Print speeds are engine speeds only, based on printing one D-sized page (34" W x 22" L). Total throughput time depends on workstation configuration, file size, print resolution, ink coverage, networking, etc.

Ink cost per ml is a simple estimate derived from cartridge MSRP divided by fill volume. This estimate does not necessarily reflect the actual cost of ink for a particular print, which can vary considerably based on image printed, print settings, paper type, frequency of use and temperature. For print quality, a variable amount of ink remains in the cartridge after the "replace cartridge" indicator comes on.

	SURECOLOR T7000	DESIGNJET T790	DESIGNJET T1300
Printer Width	44-Inch	44-Inch	44-Inch Dual Rolls
Print Head Configuration	Epson MicroPiezo TFP	HP Thermal Ink Jet	HP Thermal Ink Jet
Color Configuration	CMYK + MK	CMYK + Lk + MK	CMYK + Lk + MK
Maximum Print Resolution	2,880 x 1,440 dpi	2,400 x 1,200 dpi	2,400 x 1,200 dpi
Smallest Droplet Size (picoliter)	3.5 pl	6 pl Color / 9 pl Mk & Y	6 pl Color / 9 pl Mk & Y
Line Accuracy / Minimum Line Width	±0.1% / 0.018 mm	±0.1% / 0.06 mm	±0.1% / 0.06 mm
Ink Technology	Pigment	Dye Color + Pigment MK	Dye Color + Pigment MK
Maximum Ink Capacity per Color	700 ml	130 ml	130 ml
Maximum A1/D Print Speed - 'Fast'	25 sec/page	39 sec/page	39 sec/page
Maximum A1/D Print Speed - 'Production'	48 sec/page	2.8 min/page	2.8 min/page
Maximum A1/D Print Speed - 'Best'	2.5 min/page	9.4 min/page	9.4 min/page
Printer Language	Epson Precision XD, HP-GL/2	HP PCL 3, HP-GL/2, HP-RTL	HP PCL 3, HP-GL/2, HP-RTL
Connectivity - Standard	USB 2.0 & Gigabit Ethernet	USB 2.0 & 10/100 Ethernet	USB 2.0 & Gigabit Ethernet
Connectivity - Optional	Not Required	JetDirect Slot	JetDirect Slot
Ink Cost-per-ML (MSRP / Total ML)	\$0.40 All Colors	\$0.53 All Colors	\$0.53 All Colors
Replacement Print Head MSRP	Not Required	\$67.00 x 3 Heads	\$67.00 x 3 Heads
Printer MSRP	\$4,995	\$4,300	\$6,190

All prices include the printer stand if optional | All data as of September 2012 | **This color is the winning-feature**

Print speeds are engine speeds only, based on printing one D-sized page (34" W x 22" L). Total throughput time depends on workstation configuration, file size, print resolution, ink coverage, networking, etc.

Ink cost per ml is a simple estimate derived from cartridge MSRP divided by fill volume. This estimate does not necessarily reflect the actual cost of ink for a particular print, which can vary considerably based on image printed, print settings, paper type, frequency of use and temperature. For print quality, a variable amount of ink remains in the cartridge after the "replace cartridge" indicator comes on.



Specifications are Subject to Change Without Notice

EPSON, EPSON UltraChrome, MicroPiezo, SureColor, and TFP are trademarks or registered trademarks and EPSON Exceed Your Vision is a registered logo mark of Seiko Epson Corp.

All other product brand names are trademarks and/or registered trademarks of their respective companies.

Epson disclaims any and all rights to these trademarks.

© Epson America, Inc. 2012 TC 09.28.2012